

Arctic char data collection sheet

Capture date _____

Capture location _____
(be as specific as possible)

Captured method _____ Captured by who _____

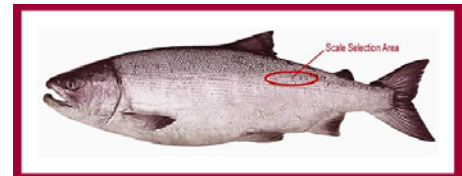
Data recorded by who _____

Fish size (fork length) _____
(tip of snout to fork in tail, **indicate whether cm or inches**)

Sex: _____ Eggs visible in body cavity? Yes or No: _____

Fish head kept? Yes or No: _____

Scale sample taken? Yes or No: _____
(see photo for sampling location)



ID code for head & scale labels (instructions below) =

INSTRUCTIONS: Please fill out a separate sheet for each fish sampled. If any body parts are retained, please ensure that they are labeled (water proof marker or pencil, not pen) to match them to this sheet. For example if a fish is caught on July 1/08, by Wayne Gretzky in Torrent River and is 52.5 cm long, then label it with an ID code as Gretzky_2008July01_Torrent_52.5. See attached sheet for a filled in example.

Place 8-12 scales within a folded piece of paper and labeled as above.

EXAMPLE

Arctic char data collection sheet

Capture date July 1/08 Capture location Torrent River

Captured by who Wayne Gretzky Captured method Rod and reel

Data recorded by who Mario Lemieux

Fish length 52.5 cm
(tip of snout to end of longer lobe of tail, **indicate whether cm or inches**)

Sex: unknown Eggs visible in body cavity? Yes or No: NO

Fish head kept? Yes or No: YES

Scale sample taken? Yes or No: NO
(see photo for sampling location)

ID code for head label = Gretzky_2008July01_Torrent52.5